



2021.1

CVR/CPR Integration
Configuration Guide

Contents

1. WorkZone Content Server 2021.1 CVR/CPR Integration Configuration Guide	3
2. What's new	4
3. About CVR/CPR Integration	8
3.1 Prerequisites	9
3.2 Configure CPR Connection	10
3.3 Test of the CPR Integration	12
3.4 OFF4 mapping information from CPR	13
3.4.1 CPR Status codes	19
3.5 Troubleshooting	21
4. About CPR Batch	22
4.1 Prerequisites	23
4.2 Configure CPR Batch	24
4.3 Configure network connection	25
4.4 Transfer subscription files	27
4.5 Import source items	29
4.6 Simulate batch job	31
4.7 Subscribe and unsubscribe automatically	32
5. About CVR Integration	35
5.1 Prerequisites	36
5.1.1 Required Contact types	36
5.2 Install the FOCES certificate	38
5.3 Configure connection to CVR Online	39
5.4 Test the CVR Integration	40
5.5 Mapping CVR information	41
6. Terms and conditions	44
7. Glossary	45

1. WorkZone Content Server 2021.1

CVR/CPR Integration Configuration Guide

This guide describes how you configure WorkZone Content Server and integrate with a service delivering CPR and CVR on-line information.

The purpose of this guide is to ensure correct configuration of the CPR and CVR integration with WorkZone Content Server.

The target audience is technicians responsible for the configuration of CPR and CVR integration with WorkZone Content Server.

➤ [View PDF version](#) 

Related product documentation

➤ [WorkZone Content Server Database Installation Guide](#)

WorkZone links

- [WorkZone documentation](#)
- [WorkZone support](#)
- [WorkZone website](#)
- [WorkZone portal](#)

2. What's new

WorkZone Content Server 2021.1

CPR Batch and Guardian/Ward relationships

When importing contacts from the Danish CPR registry, WorkZone contacts are created, updated and maintained in accordance with the new Guardian record type (017 and 052) from the Danish CPR registry. Likewise, Guardian/Ward references for WorkZone contacts are also created, updated and maintained by the CPR import.

WorkZone Content Mobility 2021.0

New CVR Integration parameter

The new `Certificatefilename` parameter has been introduced. The parameter enables you to reference a FOCES certificate when the certificate file is located in the **Certificates** folder in the WorkZone installation folder.

If the certificate file is located in a Windows Certificate Store, you must still use the `Certificate` parameter.

WorkZone Content Server 2020.3

The CPR Integration and CVR Integration modules can now be activated separately in WorkZone Configurator. Previously, both modules were enabled simultaneously, even if the organization only had installed and configured one of the two. Now the organization need only select the module they employ.

WorkZone Content Server 2020.2

No changes in this release.

WorkZone Content Server 2020.1

No changes in this release.

WorkZone Content Server 2020.0

The **C/O** field for companies is now included in WorkZone CPR/CVR Integration.

WorkZone Content Server 2019.3

No changes in this release.

WorkZone Content Server 2019.2

No changes in this release.

WorkZone Content Server 2019.1

No changes in this release.

WorkZone Content Server 2019.0

- **CVR Integration:** WorkZone CVR integration has been changed due to new integration rules from Erhvervsstyrelsen. As a consequence, it is no longer possible to search by company addresses or post code. You can still search by CVR number, P-number and/or company name.

WorkZone Content Server 2018.2

- **Captia Web Client no longer supported:** The Captia Web Client is no longer part of the WorkZone product and can not be installed with the WorkZone product.

WorkZone Content Server 2018.1 - CPR Integration

- The changes in this release.

WorkZone Content Server 2018.0 - CPR Integration

CPR Integration, CVR Integration and CVR Integration

- The online help for all three modules have been merged into the CVR/CPR Integration online help to reduce the number of online help modules and to increase overview of the three related modules.

WorkZone Content Server 2017 - CPR Integration

No changes in this release.

WorkZone Content Server 2016 R2 - CPR Integration

No changes in this release.

WorkZone Content Server 2016

- CPR Integration
 - A new **ForceUpdate** parameter has been added to the CPR source driver. CPR Integration now updates CPR records even if manual changes have been made. Changed addresses are closed, and the new addresses are imported. See [Configure CPR Connection](#).
- CVR Integration
 - It is now possible to automatically unsubscribe from a person if it is no longer allowed to subscribe to this person, and then automatically subscribe to a person again when it is allowed again. See [Subscribe and unsubscribe automatically](#).
- CVR Integration
 - A new **ForceUpdate** parameter has been added to the CVR source driver. CVR Integration now updates CVR records even if changes have

been made manually. See [Configure connection to CVR Online](#).

WorkZone Content Server 2014 R2 - CPR Integration

No changes in this release.

3. About CVR/CPR Integration

The Danish Ministry of Interior Affairs and Health's Central Office of Civil Registration (the CPR-Office), located under the Ministry of Interior Affairs and Health's Department, is in charge of the Danish CPR (Civil Registration System in English) and functions as the main supplier of basic personal information to public authorities and the private sector.

The CPR-Office is responsible for the content, maintenance and development of the Danish Civil Registration System.

The Danish CPR (Civil Registration System)

The CPR is a centralized, nationwide civil register in Denmark whose purpose is to administer the personal identification number system, to administrate general personal data reported from the national registration offices to the CPR, and to forward personal data in a technically or economically suitable manner in accordance with the Registers Act and the legislation governing civil registration.

CPR Direkte

For use in peer-to-peer communication from a customer's administrative system to the CPR, the CPR-Office has developed an application called **CPR Direkte** (CPR Direct). When you send a transaction from your administrative system with identification information to the CPR, you get relevant data back.

Subscription

With **CPR Direkte** the user can make a "subscription" to a person. This means that the user is informed, when the data of a person changes. For example, when the person's name is changed, the person is changing residence or dies.

CPR Klient

CPR Klient (CPR Client) integrates WorkZone Content Server with **CPR Direkte** and is implemented in WorkZone Content Server using the standard module Import Manager. This module is configured to import data into WorkZone Content Server.

CPR Batch

CPR Batch is an application module that handles CPR subscriptions in batch mode, see [About CPR Batch](#).

3.1 Prerequisites

To use the CVR/CPR Integration, the customer must have a contract with the hosting service provider (DXC Technology) to be able to extract data from the CPR system. DXC Technology is the hosting service provider for the **CPR-Office**¹ and delivers an application (CprDirekte_V180.exe) used in connection with the installation of the application CPR Klient. The application CPR Klient is configured with the required parameters (user name, and so on) according to the signed contract.

WorkZone Content Server must be prepared using the CPR integration including custom label and so on.

Additionally, you must have access to the WorkZone Content Server installation and the contract with DXC Technology. In this contract you will find the required configuration information concerning CPR port, CPR IP, CPR transaction code (CPR Trans. kode), custom number, user id, and password.

¹The Danish Ministry of Interior Affairs and Health's Central Office of Civil Registration (the CPR-kontoret/CPR-Office) is in charge of the Danish Civil Registration System (CRS) and functions as the main supplier of basic personal information to public authorities and the private sector.

Activate the CPR Integration module

The WorkZone Content Server CVR Integration module is installed by default when WorkZone Content Server is installed but the module is not activated by default. You must manually activate the CPR Integration module after installation in order to use the module.

To activate the CPR Integration

In WorkZone Configurator > **Global** > **Feature settings**, activate WorkZone Content Server CPR.

Service operation

You can launch the **CPR Klient** application in two ways:

- As an ordinary application with a visible user interface.
- As a Windows NT service.

When the application is running as a service, it is only visible in the Services window. It will be automatically started or stopped along with the PC.

Important: You must choose whether to run the application as an ordinary application or as a NT-service. They cannot run simultaneously.

3.2 Configure CPR Connection

This procedure describes how you configure the connection between WorkZone Content Server and the CPR using WorkZone Configuration Management.

You must apply the parameters `IP` and `DefFiles`. Regarding the compatibility with earlier versions of WorkZone Content Server, the parameter `Subscription` is introduced in connection with subscription.

Configure the CPR Connection

1. Select **Start > Configuration Management**. The **WorkZone Configuration Management** window displays.
2. Select **Operation > External Sources**. The WorkZone Configuration Management - **Module: External Sources** window displays where you can see the configurations for the external data sources.
3. Find **CPR** in the **Name** column.
4. In the **Parameters** column, enter the following:

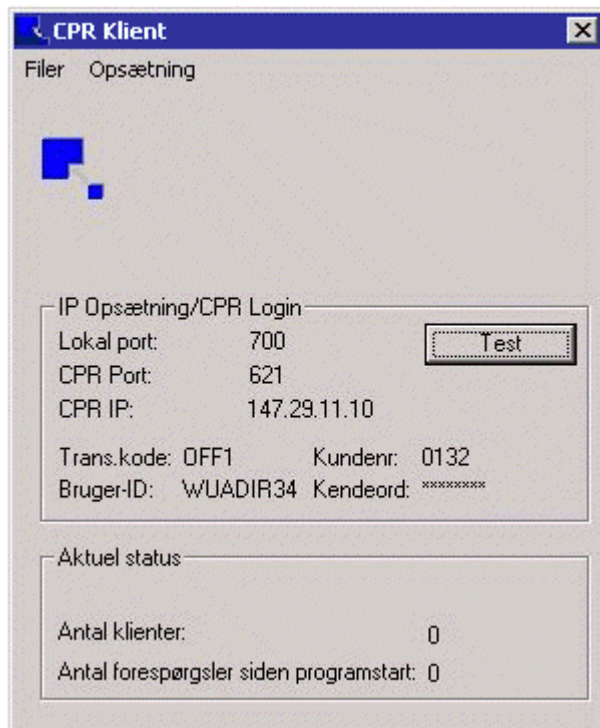
```
IP=<IP portnummer for CPRKlient>;DefFiles=.\CPRkilde\P12170.*;  
Assembly=Scanjour.CPRDriver;  
Class=Scanjour.ImportManager.CPRDriver;ForceUpdate=J
```

- IP indicates the IP address for the internal connection for the CPR integration.
 - Subscription=0 indicates that there is no subscription added to the persons (default value). If the parameter `Subscription` is not included in the parameter string, then it corresponds to `Subscription=0`.
 - Subscription=1 indicates, that subscription is added to the persons.
 - ForceUpdate=J updates CPR records, even if manual changes have been made to addresses. If addresses have been changed, the addresses are closed, and the new addresses are imported. This is the default. If the parameter is set to N, the addresses that have been changed are not updated if imported again.
5. Click the empty field to the left of the **Name** column, and select **Database > Save**. The information is stored, and the connection between WorkZone Content Server and CPR is defined.

3.3 Test of the CPR Integration

Test from the CPR Klient

1. Select **Start > All Programs > CPR Klient > CPR Klient**. The **CPR Klient** window displays.



2. Click **Test**. The **CPR Klient** window displays with a string containing codes and the text **Forbindelse og login er OK**, if the configuration is correct.

The first four characters in the string indicate the CPR customer number (kunde nr.). In the example above, it is 0132.

Character position 15-22 indicates the user id (Bruger-ID). In the example above, it is WUADIR34.

The next 2 positions contain the error message from CPR Direkte. If two characters 00 are returned there, as in the example above, then the connection is established and the login is correct.

The last 4 characters indicate the length of string. In the example above, it is 0028.

3. Click **OK**. The test is completed.

3.4 OFF4 mapping information from CPR

The following table shows how the OFF4 record types from CPR are mapped into WorkZone Content Server.

The use of different styles and fonts in the table below:

- **Bold** typeface is used for field names.
- Monospacing font is used for words to be typed in exactly as they appear.
- *<Italics in angle brackets>* are used for words to be substituted. This means that name2 = *<surname>* is interpreted as the field name2 holds the surname of a person. For example, you type Jensen in the field name2, whereas text = *<full name>* means that you must enter the full name, for instance, Karl Bay Jensen.

CPR OFF4 document Field in WorkZone Content Server number

001	Register = contact name_type = C name_code = <i><CPR number></i>
008	name1 = <i><first name, middle name></i>
008	name2 = <i><surname></i>
001	Group name = contact_info custom_label = GældendePNR info = <i><CPR number></i>
001	Group name = contact_date custom_label = Fødselsdag

CPR OFF4 document Field in WorkZone Content Server number

date = *<date of birth>*

001 Group name = contact_info
 custom_label = Køn
info = M|K

001 Group name = contact_date
 custom_label = Statusfra
date = *<status date>*

001 Group name = contact_info
 custom_label = Status
info = *<status code>*

001 If statuskode = 90, then the person is dead, and end_date is filled in. end_
date = *<status date>*
 See [CPR Status codes](#)

001 **position** = *<occupation>*

003 **text** = *<full name>*

003 Group name = address, restrictor = HA
address1 = *<street name house number>*

003 Group name = address
address2 = *<locality>*

003 Group name = address
address3 = *<care of name>*

003 Group name = address
municipality = *<municipality code>*

CPR OFF4 document Field in WorkZone Content Server number

003	<p>Group name = address</p> <p>If landekod = 5100 then</p> <p>country_code = DK</p>
003	<p>Group name = address</p> <p>postcode = <postcode></p>
002	<p>Group name = address</p> <p>start_date = <date for moving in></p>
004	<p>Group name = address</p> <p>protection = <date for start of protection of information></p>
003	<p>If the address of the person already exists in WorkZone Content Server, and it is different from the received address, then existing (that is, primary) address is considered to be invalid, and the following is inserted:</p> <p>address_type = CPRADR</p> <p>end_date = <date for moving in></p> <p>(that is, the end_date for the old address is equal to start_date for the new address)</p>
003	<p>Group name = contact_info</p> <p>custom_label = Bynavn</p> <p>info = <name of city></p>
003	<p>Group name = contact_info</p> <p>custom_label = Postdist</p> <p>info = <post district></p>
016	<p>Group name = contact_date</p>

CPR OFF4
document Field in WorkZone Content Server
number

custom_label = Umyndig

date = <date where legal guardians has been appointed to the person>

If the date for appointing legal guardians to the person is blank in the received record, then any former legal guardian attachment is removed.

009

Group name = contact_info

custom_label = Fødregkode

info = <authority code for place of birth>

009

Group name = contact_info

custom_label = Fødreg.myn.

info= <place of birth>

012

Group name = contact_info

custom_label = Civilstand

info = <marital status, civilstand i form af G>

012

Group name = contact_date

custom_label = Civst.fra

date = <wedding date>

012

custom_label = Ægtefælle

A case relation is created for the spouse through **name_ref_key**

Group name = part

name_type = C

name_code = <CPR number of spouse>

If the spouse is not registered in WorkZone Content Server, then the following is inserted:

CPR OFF4 document Field in WorkZone Content Server number

name1 = Person med cprnr <CPR number of spouse>

name2 = - ikke importeret

015

A case relation is created for the father through **name_ref_key**

Group name = part, restrictor = Forældre

If the CPR number of the father is present in the received record:

name_type = C

name_code = <CPR number of father>

If the CPR number of the father is not present in WorkZone Content Server, then the following information is added:

name1 = Person med cprnr <CPR number of father>

name2 = - ikke importeret

If the name of the father is present in the received record:

name_type = P

name1 = <name of father>

If the name of the father is not present in WorkZone Content Server, then the following information is added:

name2 = Far til <CPR number of person>

text = Person fra CPR uden cprnr

015

A case relation is created for the mother through **name_ref_key**

Group name = part, restrictor = Forældre

If the CPR number of the mother is present in the received record:

name_type = C

name_code = <CPR number of mother>

**CPR OFF4
document Field in WorkZone Content Server
number**

If the CPR number of the mother is not present in WorkZone Content Server, then the following information is added:

name1= Person med cprnr <CPR number of mother>

name2 = - ikke importeret

If the name of the mother is present in the received record:

name_type = P

name1 = <name of mother>

If the name of the mother is not present in WorkZone Content Server, then the following information is added:

name2 = Mor til <CPR number of person>

text= Person fra CPR uden cprnr

017

custom_label = Væрге

A case relation is created for the guardian through **name_ref_key**

If reltyp = 1:

Group name = part

name_type= C

name_code = <CPR number of guardian>

016

If the CPR number of the guardian is not present in WorkZone Content Server, then the following information is added:

name1 = Person med cprnr <CPR number of guardian>

name2= - ikke importeret

If reltyp = 2:

Group name = part, restrictor = Væрге

CPR OFF4 document Field in WorkZone Content Server number

name_type = P

name1 = <name of guardian>

If the name of the guardian is not present in WorkZone Content Server the following information is added:

name2 = Væрге til <CPR number of person>

text= Person fra CPR uden cprnr

3.4.1 CPR Status codes

CPR status codes are codes from the Danish Ministry of Interior Affairs and Health's Central Office of Civil Registration that indicate the status of a specific CPR number (Active/Inactive) as well as the reason.

Danish CPR status codes - in English

Status code	Status	Description
01	Active	Registered with residence in Danish population register
03	Active	Registered with high street code (9900 - 9999) in Danish population register
05	Active	Registered with residence in Greenlandic population register
07	Active	Registered with high street code (9900 - 9999) in Greenlandic population register
20	Inactive	Registered without residence in Danish/Greenlandic population register - and administrative civil registration numbers
30	Inactive	Canceled civil registration numbers
50	Inactive	Deleted civil registration numbers

Status code	Status	Description
60	Inactive	Changed civil registration numbers due to changed date of birth and/or sex.
70	Inactive	Disappeared
80	Inactive	Emigrated
90	Inactive	Deceased

Danish CPR status codes - in Danish

Status code	Status	Description
01	Aktiv	Bopæl i dansk folkeregister
03	Aktiv	Speciel vejkode (9900 - 9999) i dansk folkeregister
05	Aktiv	Bopæl i grønlandsk folkeregister
07	Aktiv	Speciel vejkode (9900 - 9999) i grønlandsk folkeregister
20	Inaktiv	Uden bopæl i dansk/grønlandsk folkeregister men tildelt personnummer af skattehensyn (kommunekoderne 0010, 0011, 0012 og 0019)
30	Inaktiv	Anulleret personnummer
50	Inaktiv	Slettet personnummer ved dobbeltnummer
60	Inaktiv	Ændret personnummer ved ændring af fødselsdato og køn
70	Inaktiv	Forsvundet
80	Inaktiv	Udrejst
90	Inaktiv	Død

3.5 Troubleshooting

In case of errors, check the following prerequisites:

- Is CPR Direkte up and running with the correct password and other parameters?
- Is the CPR client application installed and running?
- Is the WorkZone Content Server database configured to handle the CPR integration?
- Are there problems with firewalls or other programs blocking the connections between the applications?

4. About CPR Batch

CPR Batch is an application module handling CPR subscriptions in two steps:

1. Transfer of subscription files from CPR to an interim directory.
2. Import of source items from the interim directory to the database.

Transferring subscription files

Subscription files from CPR contain among other things a time stamp indicating date and time for the storing of data. This stamp is used by CPR Batch to check whether updates have been made to the current subscription files in the interim directory with CPR Direkte, see [About CVR/CPR Integration](#)

Import of source items

CPR Batch compares subscription items in the interim directory with the items in the database. If the Interim directory contains subscription items with an older time stamp than the subscription items in the database, these items are not imported by CPR Batch into the database.

Therefore, subscription data in the database cannot be overwritten with old subscription data. Unprocessed subscription items in the interim directory are only imported into the database, if the data is newer than the existing data in the database. This means that the order of importing unprocessed subscription items to the database is irrelevant.

Format description

The format description for the subscription files, and thereby for the source items, is identical to the format description for the online integration. This means, that you can

use the same descriptions as the one used by the online integration, see [About CVR/CPR Integration](#).

Firewalls

When you launch CPR Batch for the first time, you will get a warning from the Windows Firewall, because CPR Batch communicates with an external server through an FTP protocol. You must allow this type of communication. Warnings on blocking of traffic may appear. Therefore, you must get the necessary permissions to operate the system.

4.1 Prerequisites

Before you begin to configure CPR Batch, you need the following:

- Permissions for accessing the FTP-site at the CPR-Office.
- Path to the format descriptions for the CPR extract.
- Path to the Interim directory.
- Permissions for accessing the database when importing the subscription files.

When the prerequisites are in place, follow these steps in the CPR Batch process:

1. [Configure CPR Batch](#)
2. [Configure network connection](#)
3. [Transfer subscription files](#)
4. [Import source items](#)
5. [Simulate batch job](#)

Important: CPR Batch will never delete files neither on the server nor in the interim directory. This means that over time there will be an accumulation of files at the FTP site and in the interim directory. At the FTP site, the files will be moved to a mass storage after some time by DXC Technology who is the hosting service provider for the

CPR Office. The user must decide on a strategy for the maintenance of the interim directory.

4.2 Configure CPR Batch

The initial settings shown in the CPR Batch user interface are found in the configuration file `Scanjour.CPRBatch.exe.config` located in the same directory as the executable. Any subsequent user modifications are stored locally in:

```
c:\Users\\AppData\Local\SCAN•JOUR_A_S\Scanjour.CPRBatch.exe_Url_<hash_key>\<VersionNumber>\user.config
```

This file is automatically read when the application starts. This means that merely editing `Scanjour.CPRBatch.exe.config` may not have the desired effect if user settings have been saved previously.

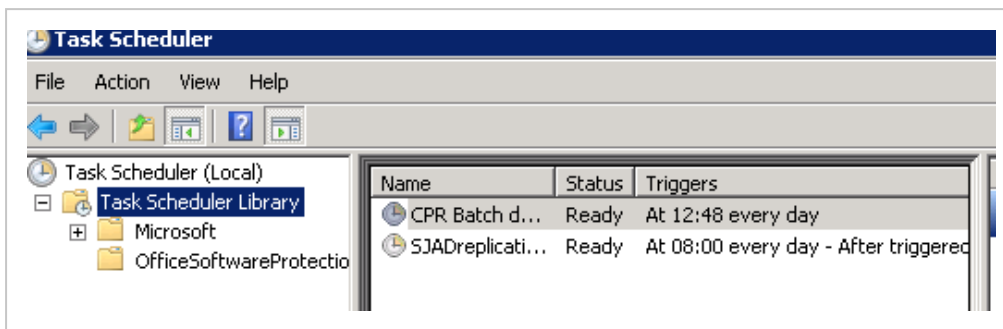
A possible way of avoiding this is to move (copy and delete) the `user.config` file to `Scanjour.CPRBatch.exe.config` in the same directory as the executable.

Interactive or batch mode

You can launch CPR Batch in two different modes – interactive or batch.

- Interactive – the application is launched using the parameter `/window`. The first time CPR Batch is launched, there is no configuration file and the application starts automatically in the interactive mode.
- Batch – in ordinary operation the application is launched using Windows Task Scheduler similar services. CPR Batch is typically activated at a certain time

every day with the parameter `/nowindow`.



The CPR Batch configuration process

The CPR Batch configuration process consists of data verification and two coherent process stages:

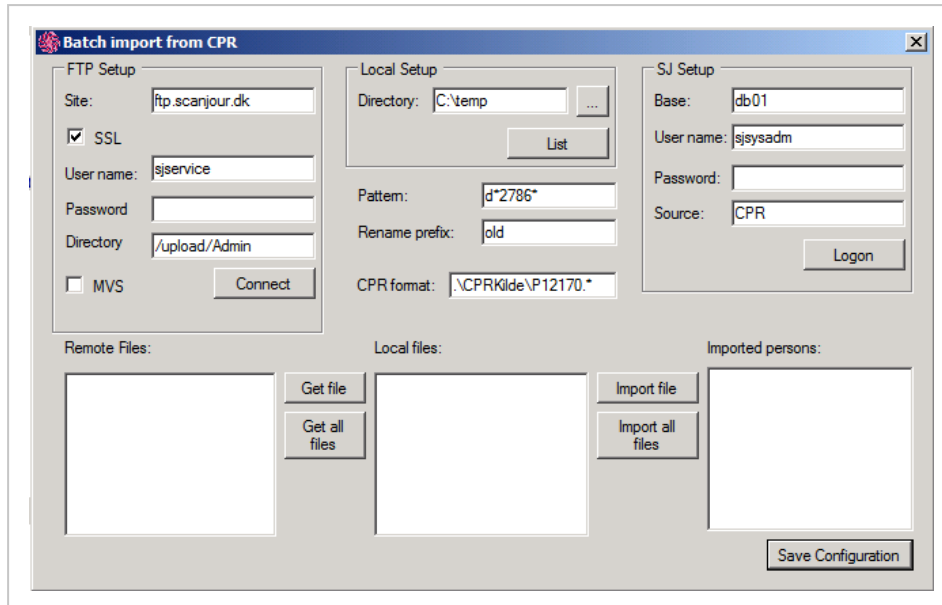
1. Transferring subscription files from CPR.
2. Importing source items to the database.

4.3 Configure network connection

This procedure describes how you configure CPR Batch to access the FTP site at CPR.

Configure network connection

1. Open the command prompt window.
2. Type `scanjour.cprbatch` and press Enter. The **Batch Import from CPR** window opens.



3. In the **FTP setup** group box, do as follows:
 - In the **Site** field, enter the IP address or domain name for the FTP server at CPR.
 - Select the **SSL** check box.
 - In the **User name** field, enter the user name delivered by the CPR Office.
 - In the **Password** field, enter the corresponding password to the user name in the **User name** field.
 - In the **Directory** field, enter the name of the directory at CPR. The default directory is the home directory of the FTP site. Normally, the subscription files are placed here, but if you have an agreement with the CPR Office to locate the subscription files elsewhere, you can specify the directory here.
 - Select the **MVS** check box when the CPR server is used. This means that the application makes an extract (max. 5000 pcs.) and matches them against the contents of the **Pattern** field.

7. In the **Pattern** field fill in the mask for the subscription files you wish to get from the FTP site.

Important: The content of the **Pattern** field must not be changed between stage 1 and 2 in the CPR Batch configuration process, see [The CPR Batch configuration process](#).

8. Click **Connect**. A list of files is shown in the **Remote files** list. The list contains the files from the specified directory at the FTP site matching the specified mask in the **Pattern** field.

Note: A file name in brackets indicates that the file is 'Migrated' at CPR, which means that the subscriptions file is located at a mass storage and is not accessible momentarily.

9. Click **Save Configuration** to save the current configuration.

Consistent data

In the **Batch Import from CPR** window, the **Pattern** and the **Rename prefix** fields are used and valid for both the **FTP setup** group box and the **Local Setup** group box.

The **FTP setup** group box is used in the above procedure [Configure network connection](#).

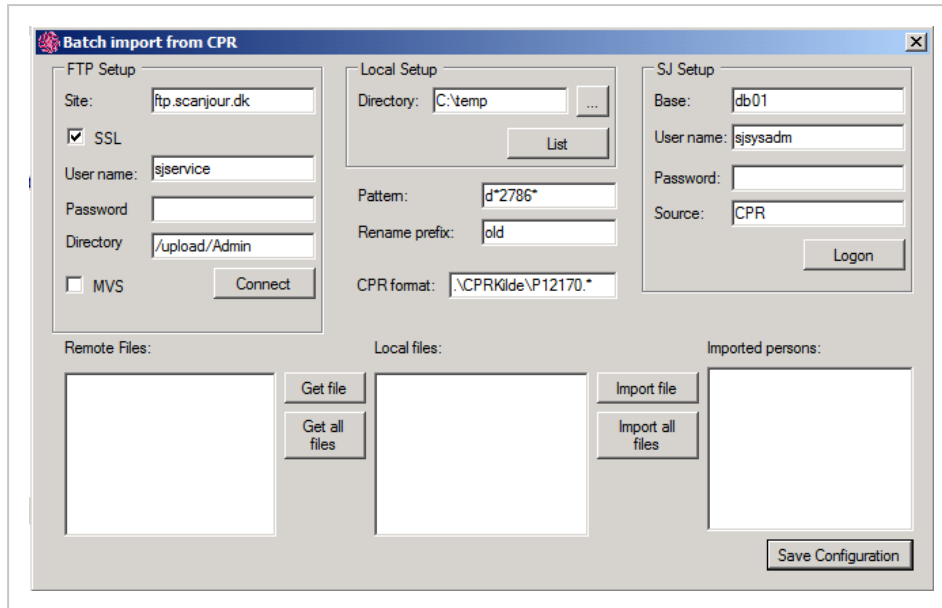
The **Local Setup** group box is used in the procedure [Transfer subscription files](#).

To ensure a consistent data flow of the two process stages, see [Configure CPR Batch](#), the values in the **Pattern** field and in the **Rename prefix** field must not be changed during the 2 process stages.

4.4 Transfer subscription files

This procedure describes how you transfer one or more subscription files from the **Remote files** list to the **Local files** list in the interim directory.

1. Open the command prompt window.
2. Type `cprbatch` and press Enter. The **Batch Import from CPR** window opens.



3. In the **Local setup** group box, do as follows:

- o In the **Directory** field in the **Local Setup** group box, enter the name of the interim directory or browse to find the relevant directory.

Note: If you want to see the files in the interim directory, click **List**. The **Directory** field specifies the interim directory on your local PC. This directory should not be used for other purposes.

- o In the **Rename prefix** field, enter the prefix of your choice.

Note: After transferring the remote files their file name is changed by adding the given prefix. The content of the **Rename prefix** field must not be changed between stage 1 and 2, see [Configure CPR Batch](#).

4. To transfer a single subscription file to the interim directory, select a file in the **Remote files** list and click **Get file**. To transfer all subscription files to the interim directory, click **Get all files**. The names of the subscription files appear in the **Local files** list.

Note: The **Local files** list shows the files that match the mask specified in the **Pattern** field.

5. Click **Save Configuration** to save the current configuration.

Renaming

After transferring the specified subscription files, CPR Batch will rename these files by adding the prefix from the **Rename prefix** field to the file names. As a consequence, the file names disappear from the **Remote files** list, but the files still physically exist.

4.5 Import source items

To import the source items from the subscription files in the **Local files** list to a database, you must fill in the **CPR format** field and in the **SJ Setup** group box you must specify the database name, logon information, and source.

This procedure describes how you import the source items from the subscription files in the **Local files** list.

1. In the **Batch Import from CPR** window, do as follows:
 - In the **CPR format** field, enter the format description, for example:
.\CPRkilde\P12170.* (OFF4).
 - In the **Base** field in the **SJ Setup** group box, enter the ODBC name for the database.
 - In the User name field in the SJ Setup group box, enter the name of a WorkZone Content Server user for the database.
 - In the **Password** field in the **SJ Setup** group box, enter the corresponding password to the user name.

- In the **Source** field in the **SJ Setup** group box, enter the name of the source for importing – as a rule **CPR**.
2. Click **Logon**. CPR Batch logs on to the specified database, localizes the source specified in the **Source** field, and initializes it with the format description given in the **CPR format** field.
3. Do one of the following:
 - Select a file in the **Local files list** and click **Import file** to import a single file.
 - Click **Import all files** to import all files.

The names of persons appear in the Imported persons list.
4. Click **Save Configuration** to save the current configuration.

Configuration file

If you click **Save Configuration**, the configuration is stored in the file `user.config` in the location described in [Configure CPR Batch](#).

Passwords are encrypted in this file. When you launch the application without user interaction, CPR Batch will use this configuration. If you have changed the configuration and you leave CPR Batch without saving, you are requested to save the configuration.

Renaming

After importing the specified subscription files, CPR Batch will rename these files by adding the prefix from the **Rename prefix** field to the file names. As a consequence the file names disappear from the **Local files** list, but the files still physically exist.

Log file

Regardless of the mode for launching, the important actions of CPR Batch are stored in the file `cprbatch.log`.

Error log

If any errors occur or there are comments on the import, an error log file is created in the interim directory. The name of the error log file is the concatenation of the prefix `err` and the name of the imported file.

Check import

After the import, you can double-click on the name of a person in the **Imported persons** list and get further information from the log file on the status of the import.

4.6 Simulate batch job

Typically, CPR Batch launches as a batch job initiated Windows Task Scheduler or similar at a certain time of day with the parameter `/nowindow`.

This procedure describes how you simulate a batch job. A batch job resembles the following procedure where you launch the application with a given configuration file, `Scanjour.CPRBatch.exe.config`.

1. Type `cprbatch/window` in the command prompt window and press Enter. The **Batch Import from CPR** window appears.
2. Do as follows:
 - Click **Logon** in the **SJ Setup** group box.
 - Click **Connect** in the **FTP setup** group box.
 - Click **Get all files**.

Note: The subscription files are transferred to the interim directory and renamed on the server.

- Click **Import all files**.

Note: The files are imported to the database and renamed in the interim directory.

4.7 Subscribe and unsubscribe automatically

With CPR Batch, it is possible to automatically subscribe to a person when the person is related to one or more open cases, and is not already subscribed to at CPR.

If it is no longer allowed to subscribe to a person, CPR Batch will automatically unsubscribe from this person. For example, if a person is not related to any open cases and was subscribed more than 7 days ago, it is not allowed to subscribe to this person at CPR.

Subscription settings in the Source_record Table

CPR Batch handles subscribing to or unsubscribing from persons that are marked to be subscribe or unsubscribed in the **SOURCE_RECORD** table.

When you subscribe to a person, the data for this person is retrieved from CPR.

In the **SOURCE_RECORD** table, two fields are used for subscription settings:

- **SRC_SUBSCRIBED:**

'J' means that the persons is subscribed to CPR. 'N' means that the person is unsubscribed from CPR. The field is maintained by the ImportManager that sets it to 'J' when retrieving data from CPR, and to 'N' when sending unsubscribing data to CPR.

- **SUBSCRIBED:**

'J' subscribes a person if the person is not already subscribed to CPR. 'N' means unsubscribes a person if the person is subscribed to CPR.

When you upgrade the database to WorkZone Content Server 2021.1, all records for the source 'CPR' are updated to set the **SRC_SUBSCRIBED** field to 'J' and the **SUBSCRIBED** field to null. This is based on the assumption that all persons for source = 'CPR' are subscribed to CPR.

Note: At a customer site, it may be necessary to adjust the setting for the **SRC_SUBSCRIBED** field, if the assumption that all persons are subscribed is not correct.

A customer can get a file from CPR that includes all CPR numbers that the customer has subscribed to. The data in this file can be used to set the **SRC_SUBSCRIBED** field.

The SJP_CPR_ADM .SET_SUBSCRIPTION job

You use the SJP_CPR_ADM .SET_SUBSCRIPTION job to set the **SUBSCRIBED** field automatically.

Subscribe

The **SUBSCRIBED** field is set to 'J' if the person:

- Is not subscribed to CPR (`SRC_SUBSCRIBED='N'`).
- Is related to one or more open cases.

If a customer wants another algorithm for automatically subscribing to or unsubscribing from a person, you can create another job that sets the **SUBSCRIBED** field. You can use the standard WorkZone Content Server Oracle package SJP_CPR_ADM as a template for the job.

Unsubscribe

The **SUBSCRIBED** field is set to 'N' if the person:

- Is subscribed to CPR (`SRC_SUBSCRIBED='J'`).
- Is not related to any open cases.
- And it is more than 7 days ago that the data of that person was updated from CPR.

Note: When you start the job, you can specify a different number of days than 7. 7 days is the default value.

Start the SJP_CPR_ADM.SET_SUBSCRIPTION job

Execute the following statement to start the job:

```
sjp_cpr_adm.job_set_subscription(<start_time>, <delay_days>)
```

- <start_time> is 'trunc(sysdate+2)' by default. The job runs every night 2 hours after midnight.
- <delay_days> is 7 by default. It specifies how many days ago the person's data was updated from CPR, see above.

5. About CVR Integration

This chapter describes how to configure the CVR Integration in WorkZone Content Server so you can retrieve CVR information for your business contacts.

About the Central Business Register (CVR)

The Danish Business Authority (Erhvervsstyrelsen) owns and administers the Central Business Register (**CVR**¹) which contains primary business data for all businesses in Denmark. Governmental and municipal institutions and departments as well as professional & private unions and public clubs are also included in the CVR.

Small, privately-owned businesses with an annual turnover of less than 50,000 DKK are exempt from the register, but may submit their company data to the CVR voluntarily.

CVR Data

The CVR contains information on all businesses in Denmark including business sector classification, company contact address, credit information, fiscal reports, status and management reports. The CVR also contains information of persons who are connected with the company in question - for example owners, board members, major shareholders and founders.

The contents in the CVR is populated based on information and mandatory reports which the companies submit to the CVR.

Publicly accessible

Previously, access to the CVR could be purchased on a single-use basis or by subscription but today business data from the CVR itself is public and freely accessible if electronic means are used to extract the data. Company data registered and made publicly

¹The Danish Central Business Register contains primary business data from all business in Denmark save small, privately-owned companies with a turnover of less than 50,000 DKK.

accessible from other public governmental venues might also be accessed when looking up CVR data, depending on the type of business queried.

Data from the CVR may be utilized and distributed freely but any company data regarding protection from direct advertizing must be respected.

Target audience

The target audience for this guide is project managers and technicians responsible for the configuration of the CVR Integration.

Related product documentation

- [WorkZone Content Server Database Installation Guide](#)

5.1 Prerequisites

The following prerequisites must be in place before your organization can start to use WorkZone's CVR Integration module.

5.1.1 Required Contact types

The **J** (virksomheder (med CVR)/Companies (with CVR) and **V** (Produktionsenheder/Production units) Contact type must be created in the Contact type table. Otherwise, the CVR contacts will not be created in the contact register.

Contact types are created and maintained in WorkZone Configurator > **Contact** > **Contact type**.

Create the following contact types:

Name type	Auto id	Name length	Text	Code validation*
J	N	8	Virksomheder (med CVR)/Companies (with CVR)	CVR (Legal Units)
V	N	10	Produktionsenheder/Production units	CVR (Production

Name type	Auto id	Name length	Text	Code validation*	Units
-----------	---------	-------------	------	------------------	-------

See [Code validation algorithms](#) for more code validation algorithms.

Note: If you use other addressee types than **J** and **V**, a customer specific solution is required.

Activate the CVR Integration module

The WorkZone Content Server CVR Integration module is installed by default when WorkZone Content Server is installed but the module is not activated by default. You must manually activate the CVR Integration module after installation in order to use the module.

To activate the CVR Integration

In WorkZone Configurator > **Global** > **Feature settings**, activate WorkZone Content Server CVR.

Create a CVR online subscription

To access CVR-online, you must have a subscription with the Agency for Data Supply and Efficiency (Danish: Styrelsen for Dataforsyning og Effektivisering.)

The WorkZone Content Server CVR Integration module is an online integration to the Datafordeler Webservice. The Datafordeler Webservice is managed and made publicly available by the Agency for Data Supply and Efficiency and requires a subscription in order to access the data it contains,

Create a service user for the Datafordeler site

Once you have an registered your agreement, you can create a service user in order to a create a FOCES certificate which you need to access the Datafordeler Webservice.

For more information ,see <https://datafordeler.dk/> (external link)

Note: CVR Integration is limited to handling legal units and production units only.

Create a FOCES certificate

After you have created a service user, you can create and download a valid FOCES certificate (Funktionscertifikat) from The Agency for Data Supply and Efficiency (Danish: Styrelsen for Dataforsyning og Effektivisering) on the the agency's website. (<https://datafordeler.dk/> (external link))

Note: The FOCES certificate is not permanent and must be renewed periodically.

Open access to the Datafordeler WebService

Once you have created and set up the necessary agreements and certificates, you must ensure your organization can access the Datafordeler WebService.

You must grant access to the URL <https://s5-certservices.datafordeler.dk>.

5.2 Install the FOCES certificate

Before you configure the CVR Integration, the CVR Integration prerequisites must be fulfilled. and you must know the name of and have access to the IIS server you want to install the FOCES certificate on.

Install the FOCES certificate

When you have received the FOCES certificate file (*.p12), you can either place the certificate file in a folder reserved for WorkZone related certificates on the IIS server or add the certificate file in a Windows Certificates Store, also on the IIS server.

The FOCES certificate file can be renamed if a more readable name is desired.

The FOCES certificate file must be placed on each IIS server WorkZone uses. If the FOCES certificate file is not correctly placed on the IIS server, CVR Integration cannot be used by any WorkZone clients that connect to the IIS server.

The WorkZone **Certificates** folder

Copy the FOCES certificate file (*.p12) to the **Certificates** folder on the IIS server.

The default location of the **Certificates** folder is **C:\ProgramFiles (x86)\KMD\WorkZone\Certificates**.

If the certificate is placed in the **Certificates** folder, you must use the `Certificatefilename` parameter when configuring the connection to CVR Online.

The Microsoft Certificate Store

You can also place the FOCES certificate file (*.p12) in a Microsoft Certificate Store on the IIS machine. The **MMC Console** can be used to add or move a certificate file to a Microsoft Certificate Store.

Note: To run the **MMS Console**, you must have administrator privileges.

If the certificate is placed in a Microsoft Certificate Store, you must use the `Certificate` parameter when configuring the connection to CVR Online.

See Also

[Prerequisites](#)

[Configure connection to CVR Online](#)

5.3 Configure connection to CVR Online

Prerequisites:

- You must have access to the **Operation** module in WorkZone Configuration Management.
- Your AD profile must contain the system access code DATAADM.

1. Open WorkZone Configuration Management.
2. Click **Operation > External Sources**.
3. In the **External Sources** module, select **CVR-J** in the **Name** column.
4. In the **Parameters** column, you enter the following string in the **CVR-J** row:

```
Level:<0>, UserID:<UserID>,Password:<Password>,  
Certificate:<Certificate name>, Certificatefilename=<Certificate  
file name>,  
Assembly=Scanjour.CVRDriver,Class=Scanjour.ImportManager.CVRDrive  
r;Jtype=J;Ptype=V;ForceUpdate=J
```

5. Click in the cell and enter the following changes:

- Replace <0> with the value 1, 2, or 3 according to the Access level of information covered by the CVR agreement.
- Replace <UserID> with the username provided by CVR Online.
- Replace <Password> with the password provided by CVR.
- Use the `Certificate` parameter if the certificate is located in a Windows Certificate Store, specify the certificate file name in <Certificate name> and remove the entire `Certificatefilename` parameter.
- Use the `Certificatefilename` parameter if the certificate is located in the **C:\ProgramFiles (x86)\KMD\WorkZone\Certificates** folder, specify the certificate file name in <Certificate file name> and remove the entire `Certificate` parameter.

6. Click in another cell and then click **Database > Save** to save the changes. The connection between WorkZone Content Server and CVR Online is now defined.

5.4 Test the CVR Integration

After the CVR Integration module has been set up and the FOCES certification file copied to the IIS Server, you can test if the CVR integration works as expected.

To test the

1. Open WorkZone Client and create a new contact of the type Companies (with CVR) to open the **New Companies (with CVR)** detail page
2. In the **ID** field on the **New Companies (with CVR)** detail page, click the circle to open the **Import Company** form.
3. In the **Import Company** form > **ID** field, enter 1003387453 and click **Search**.
4. If the CVR Integration module has been set up correctly, the **Import Companies** form will be populated with the KMD A/S - Ballerup company.

5.5 Mapping CVR information

The table below shows the alignment of data transferred from Datafordeleren and WorkZone Content Server.

The table below is an overview of the field to field mapping.

Notes:

- The record received from Datafordeler either contains GeneralAddress or CPRValidAddress. WorkZone Content Server uses whichever information is available.
- A primary as well as a secondary activity class may be available in the record. Activity classes are inserted into the **info** field. They are inserted with `mode=replace`, which means that if the **info** field already contains activity classes, they are deleted and replaced with the new information.

Information from Datafordeler	Field in WorkZone Content Server
CVR no.	Register=Contact name_type J name_code =<CVR no.>

Information from Datafordeler	Field in WorkZone Content Server
P. Unit no.	Register=Contact name_type V name_code =<P.Unitno.>
LegalUnitNameInfo/LegalUnitName	name1 =<LegalUnitName>
GeneralAddress	Group name=address, restrictor=HA restrictorField=address_type Address1=<RoadName HouseNumberFrom> Postcode =<PostalCode>
The following information is used:	
<ul style="list-style-type: none"> • Roadname • HouseNumberFrom • PostalCode 	
CPRValidAddress	Group name=address restrictor=HA restrictorField=address_type Address1=<RoadName HouseNumberFrom> Postcode =<PostalCode>
The following information is used:	
<ul style="list-style-type: none"> • Roadname • HouseNumberFrom • PostalCode 	
Telephone/TelephoneNumber	Group name=address restrictor=HA restrictorField=address_type phone_no =<TelephoneNumber>
Fax/FaxNumber	Group name=address restrictor=HA restrictorField=address_type fax =<FaxNumber>
Email/EmailAddress	Group name=address

Information from Datafordeler**Field in WorkZone Content Server**

restrictor=HA

restrictorField=address_type

email=<EmailAddress>

MainActivity/ActivityClass
SecondaryActivity/ActivityClass

MultiValuedGroup name=info

restrictor=Branche

restrictorField=custom_label mode=replace

info=<ActivityClass>

6. Terms and conditions

Intellectual property rights

This document is the property of KMD. The data contained herein, in whole or in part, may not be duplicated, used or disclosed outside the recipient for any purpose other than to conduct business and technical evaluation provided that this is approved by KMD according to the agreement between KMD and the recipient. This restriction does not limit the recipient's right to use information contained in the data if it is obtained from another source without restriction set out in the agreement between KMD and the recipient or by law.

Disclaimer

This document is intended for informational purposes only. Any information herein is believed to be reliable. However, KMD assumes no responsibility for the accuracy of the information. KMD reserves the right to change the document and the products described without notice. KMD and the authors disclaim any and all liabilities.

Copyright © KMD A/S 2021. All rights reserved.

7. Glossary

C

CPR

CPR is the Danish abbreviation for "Det Centrale Personregister" which contains the personal identification numbers of Danish citizens stored in CRS.

CPR-Office

The Danish Ministry of Interior Affairs and Health's Central Office of Civil Registration (the CPR-kontoret/CPR-Office) is in charge of the Danish Civil Registration System (CRS) and functions as the main supplier of basic personal information to public authorities and the private sector.

CPR number

The Danish personal identification number.

CRS

The Danish Civil Registration System (CRS), in Danish called CPR, is a nationwide civil register whose purpose is to administrate the personal identification number system and to administrate general personal data reported from the national registration offices to the CPR.

CVR

The Danish Central Business Register contains primary business data from all business in Denmark save small, privately-owned companies with a turnover of less than 50,000 DKK.

R

Registers Act

In Danish "persondataloven". The act that governs legislation concerning Civil Registration.

S

Subscription

From WorkZone Content Server it is possible to make a "subscription" to a person. This means that the user is informed when the data of a person changes. For example, when the person's name is changed, the person is changing residence or dies.